

Fishbourne Grove



Spacious accommodation over three levels

Five generous bedrooms, two ensuite

Separate lounge, sitting room/study, and open-plan kitchen/diner

Double garage, attractive enclosed garden, rear drive and extra space between the garage and house

Well presented and worthy of inspection

£335,000



Multi-Award Wining

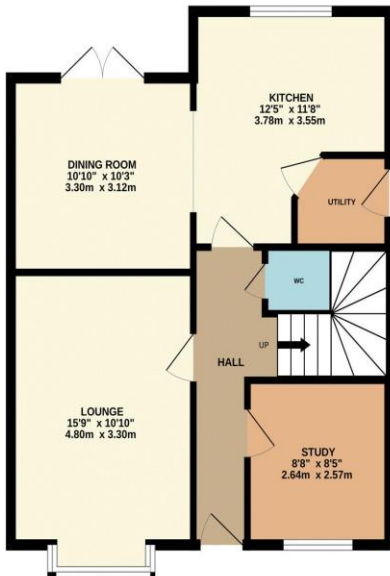


Delivering spacious accommodation over three generous levels, this large family home really needs internal inspection to be fully appreciated. Situated within the sought after 'Rings' area of Ingleby Barwick, whilst occupying a plot which enjoys a generous rear garden, double detached garage, rear double drive with additional space between the garage and house.

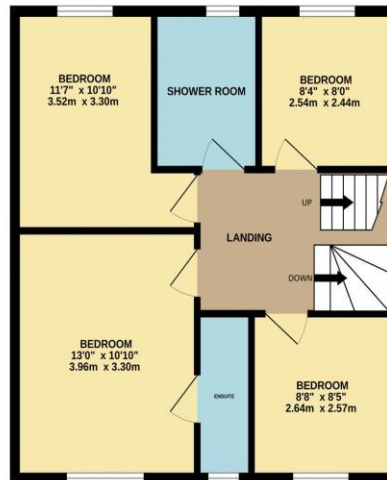
Briefly, the accommodation comprises an entrance hall, cloakroom/WC, spacious lounge, sitting room/study, and open-plan kitchen/diner with utility off to the ground floor. The first floor brings four good bedrooms, 'Master' with ensuite and separate, impressive refitted family shower room. A further large double bedroom is delivered to the second floor, with a second ensuite, a space that could easily be occupied as the 'Master' to suit a new owner.

Ingleby Homes recommended.

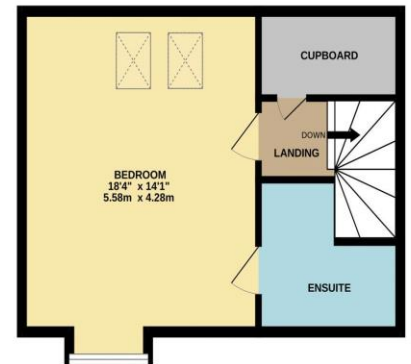
GROUND FLOOR
601 sq.ft. (55.8 sq.m.) approx.



1ST FLOOR
552 sq.ft. (51.3 sq.m.) approx.



2ND FLOOR
386 sq.ft. (35.8 sq.m.) approx.



TOTAL FLOOR AREA: 1539 sq.ft. (142.9 sq.m.) approx.

Whilst every attempt has been made to ensure the accuracy of the floorplan contained here, measurements of doors, windows, rooms and any other items are approximate and no responsibility is taken for any error, omission or mis-statement. This plan is for illustrative purposes only and should be used as such by any prospective purchaser. The services, systems and appliances shown have not been tested and no guarantee as to their operability or efficiency can be given.

Made with Metropix ©2024

"The Ingleby Barwick Experts"





Tenure: Freehold

Council Tax Band: E



AGENTS NOTE: Every care has been taken with the preparation of these details, but they are for general guidance only. Measurements and dimensions are approximate, and any fixtures or fittings shown in photography does not infer that they are to be included within the sale. The agent has not tested any appliances or supplies and professional verification of these should be sought prior to purchase if required. These particulars do not constitute a contract or part of a contract.